

Explosion-proof Emergency LED Driver Programming Guide

LED Driver: Explosion-proof Emergency LED Driver

Programmer: MSSL200



Software: Programmable Driver Configurator Software_V2.10

Programmable Driver Configurator(V2.10)

Port Set Connection Load Save Read Program Firmware Upgrade About us

MOONS' moving in better ways

Driver Type

☐ CLKS

☐ CP

☐ 50WDC

☐ 160W

☒ EPS

☒ Check All

EPS

Emergency Power Supply

Battery Capacity 6000 mAH (2000mAH ~ 6000mAH)

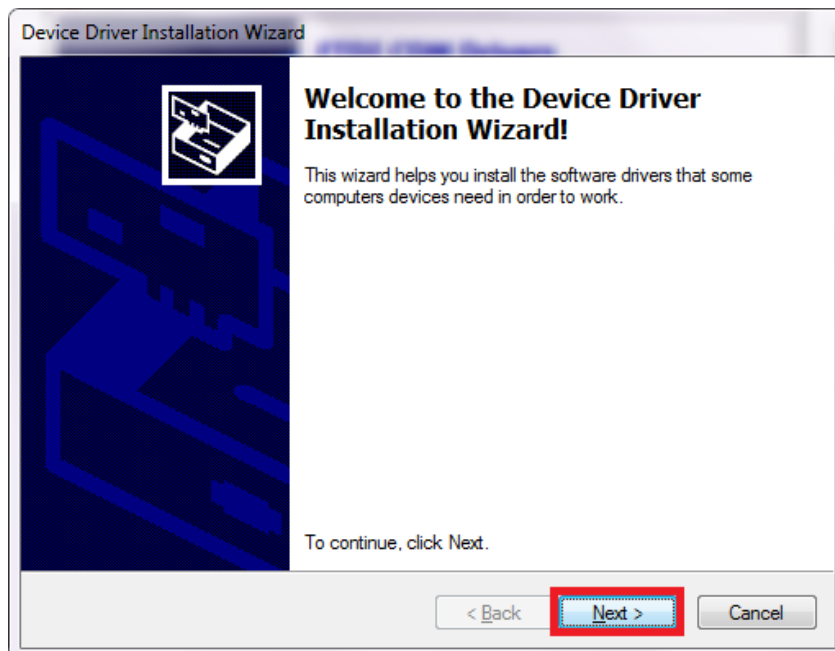
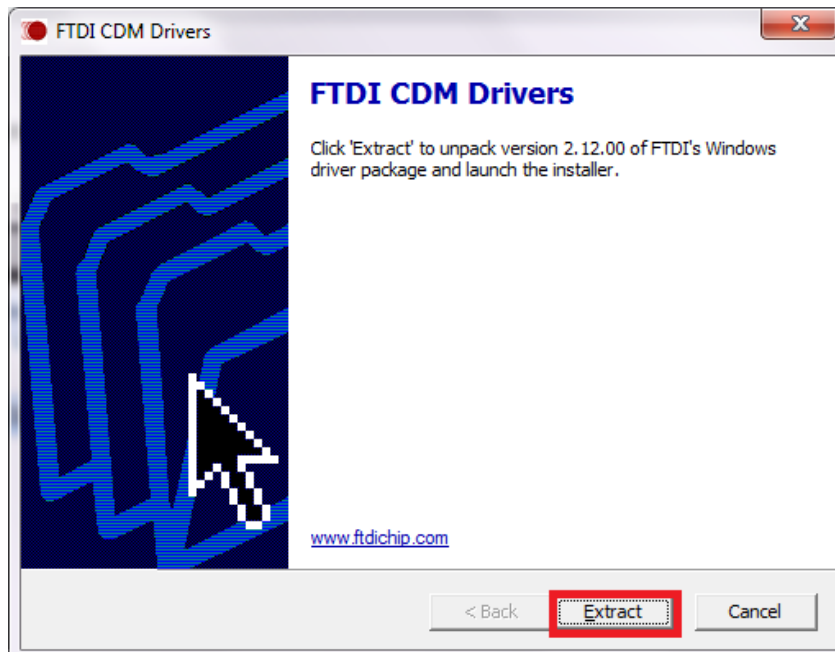
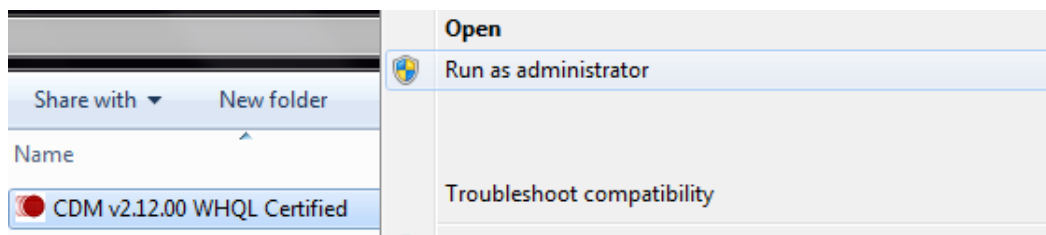
Emergency Current 200 mA

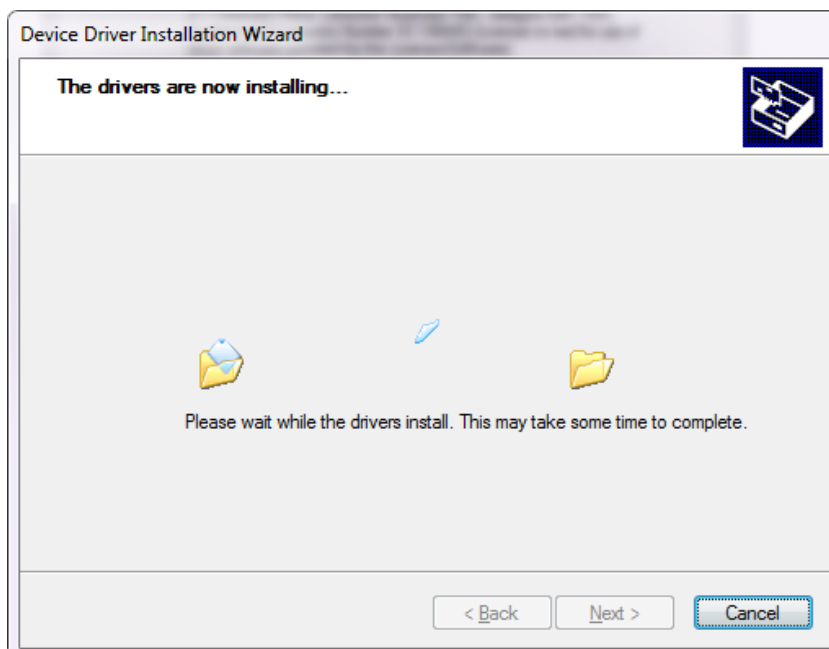
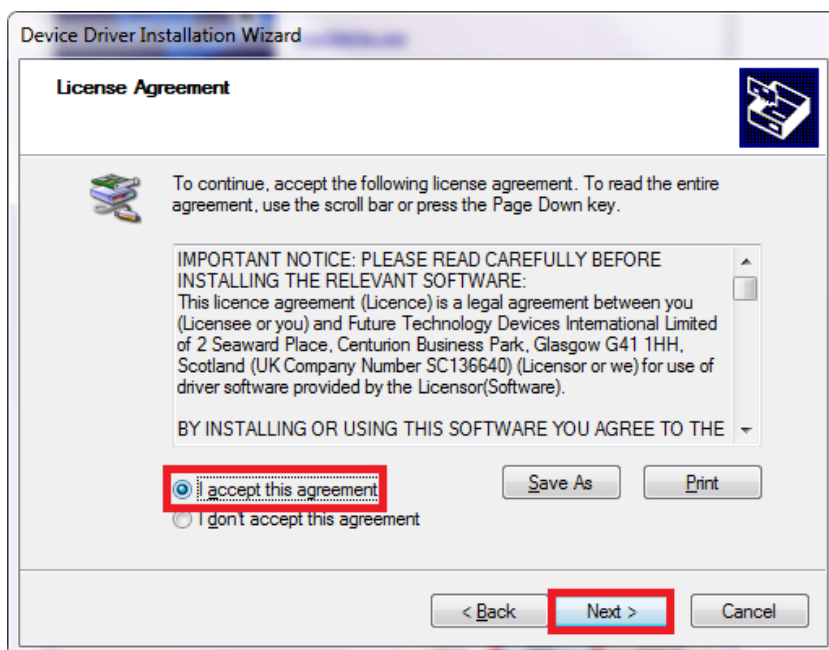
Emergency Power 15.00 W (1.5W ~ 15W)

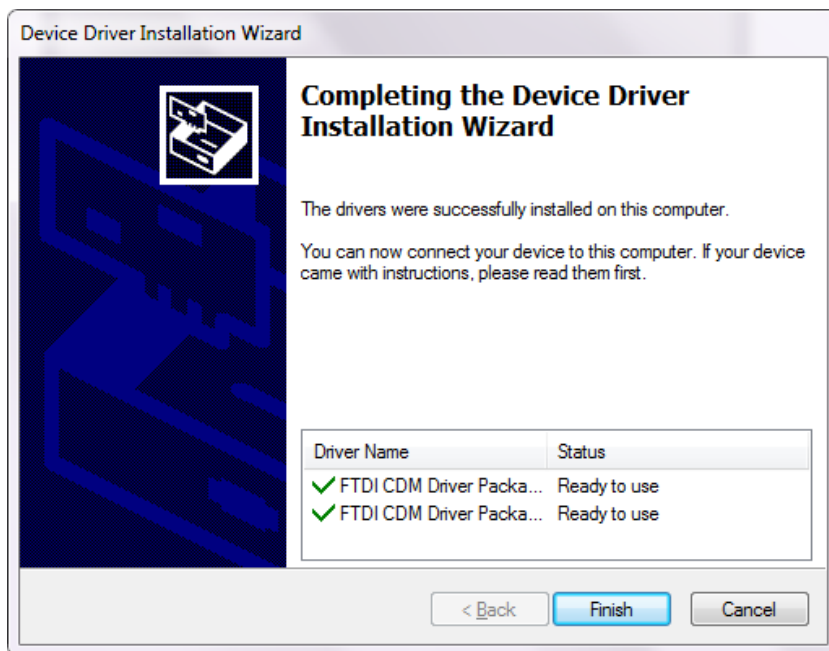
COM12 Success SAP 4529222001539 Serial Number MU015H020AQ_MB/EM Burn Version:2.0 Driver Version: 1.1

1. Install USB Driver of Smartkey

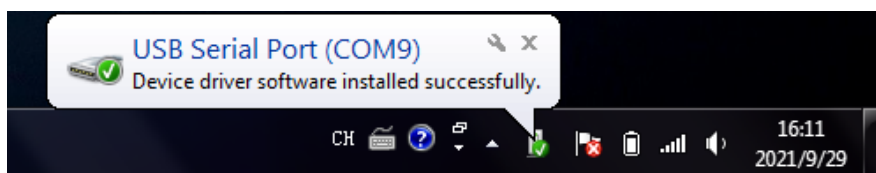
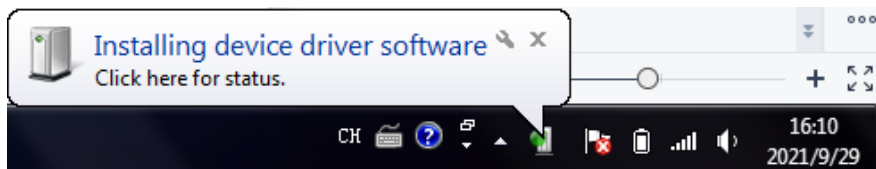
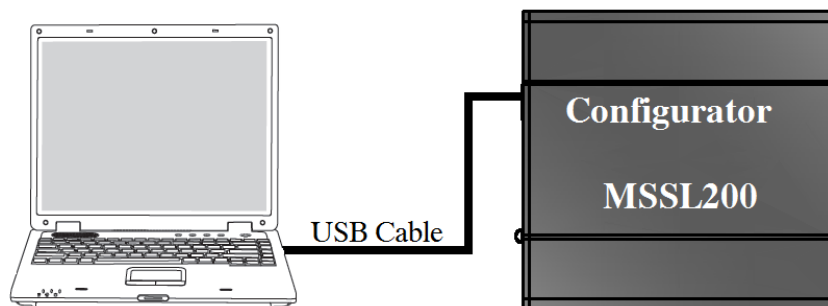
Operate “CDM v2.12.00 WHQL Certified” as administrator.



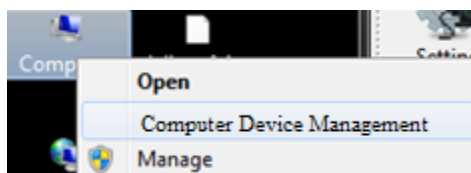


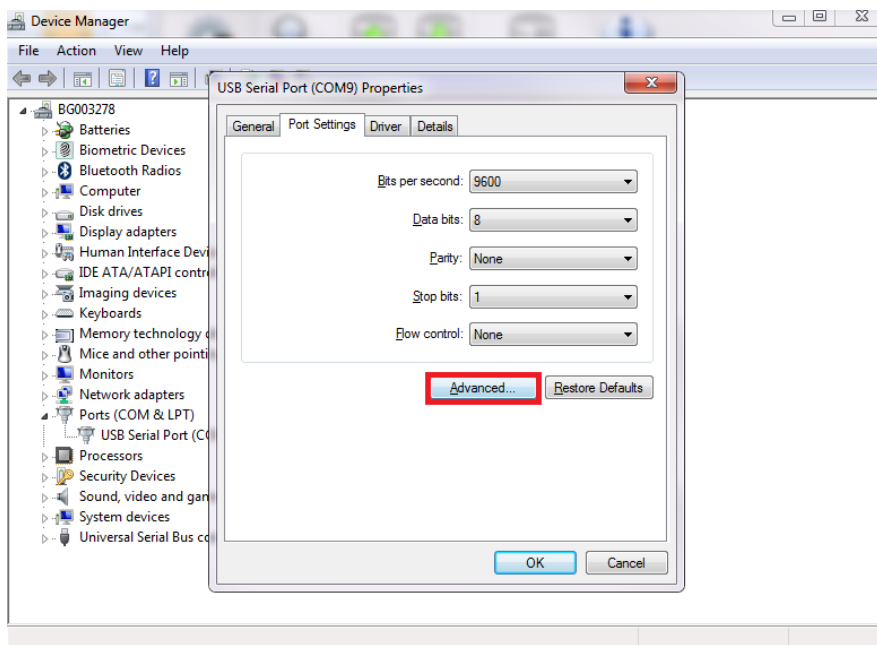
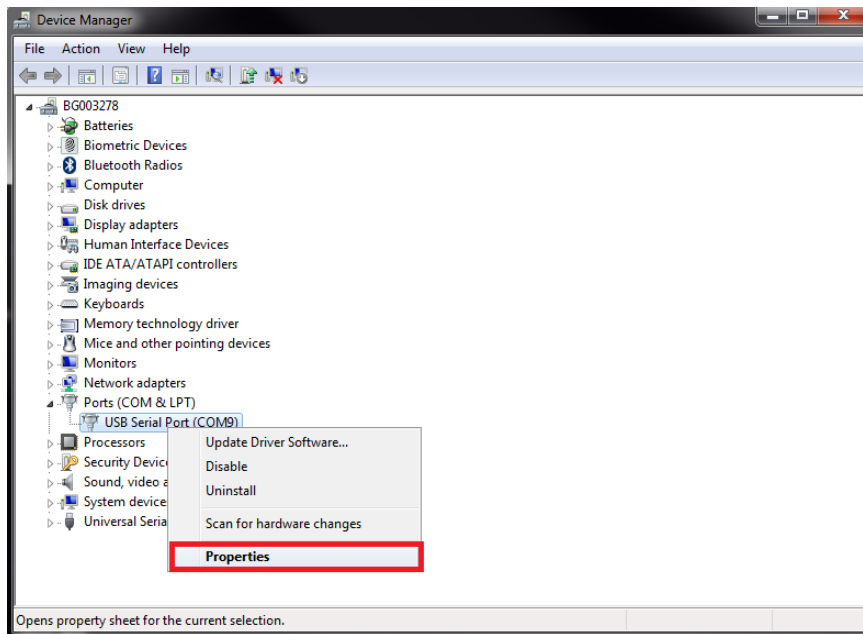


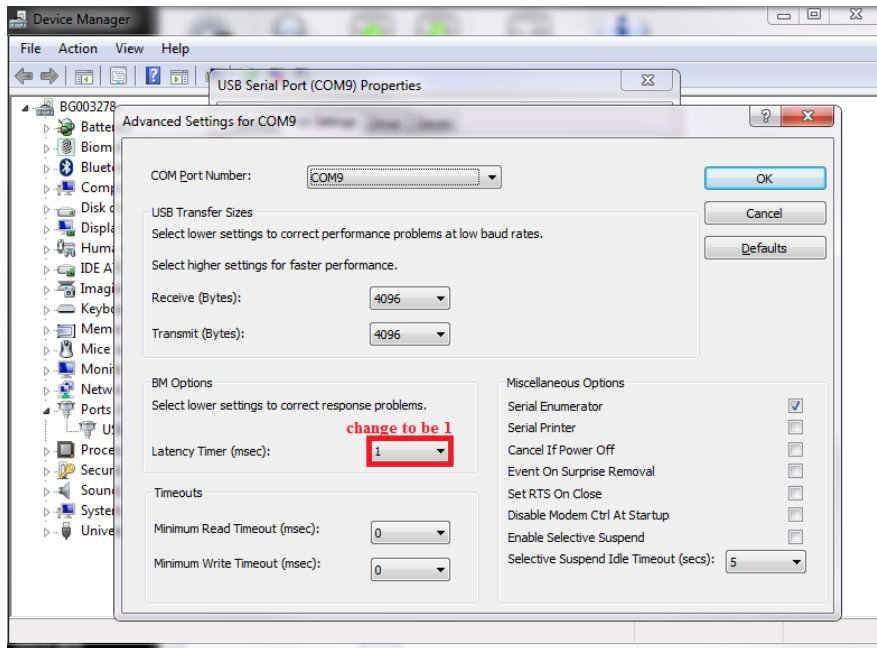
When programmer connect to PC's USB port, PC will cost few seconds to recognize programmer's port number.



Next please enter computer manage device

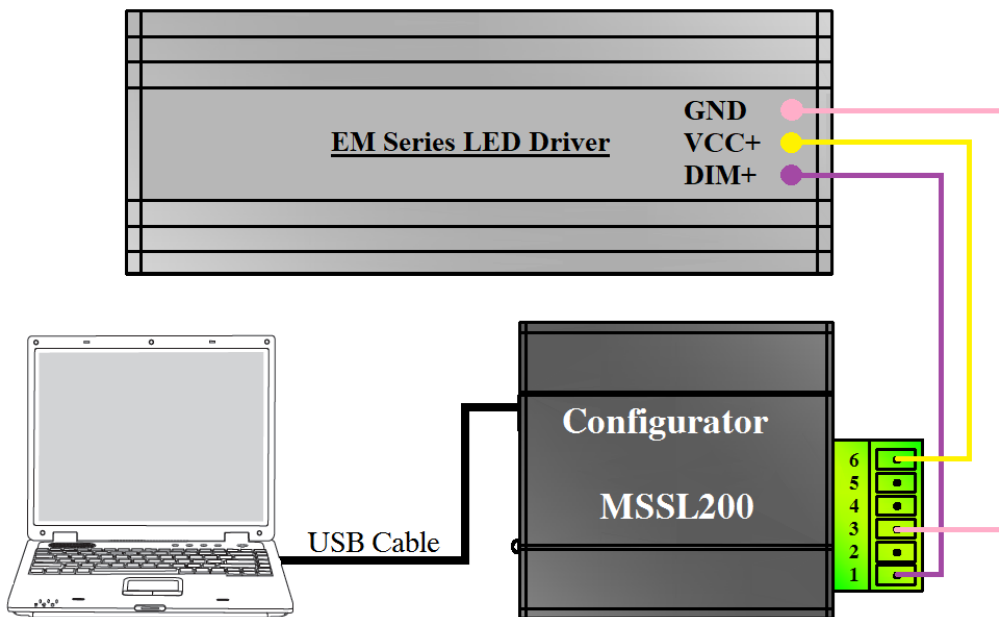




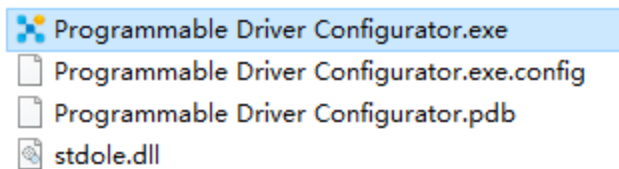


And then click OK to save.

2. Complete wiring



3. Operating software and start to program LED driver



Programmable Driver Configurator(V2.10)

Port Set Connection Load Save Read Program Firmware Upgrade About us

Driver Type

- ☒ CLKS
- ☐ CP
- ☐ 50WDC
- ☐ 160W
- ☐ EPS

☒ Check All

☒ AOC ☒ AST ☒ DIS ☒ CLO ☒ FT ☒ NTC

Config NTC CLO EPS

Adjustable Output

Module Current

Max Current

Adjustable Startup

Start Fadeup Time

Fade Time(FT)

Fadeup Time 1 s

Port setup

Port Name COM12

Parity

- ☒ None
- ☐ Odd
- ☐ Even
- ☐ Mark
- ☐ Space

BaudRate

- ☐ 110
- ☐ 300
- ☐ 1200
- ☐ 2400
- ☐ 4800
- ☐ 9600
- ☒ 19200
- ☐ 38400
- ☐ 57600
- ☐ 115200

Data Length

- ☐ 5
- ☐ 6
- ☐ 7
- ☒ 8

Stop bits

- ☒ 1
- ☐ 1.5
- ☐ 2

☒ AOC ☒ AST ☒ DIS ☒ CLO ☒ FT ☒ NTC

Close

Fixed ClockDIM No Dimming

10% 20%

0 1 2 3 4 5 6 7 8 9 10V

COM12 SAP Serial Number Burn Version:1.0 Driver Version: 1.0

Programmable Driver Configurator(V2.10)

Port Set Connection Load Save Read Program Firmware Upgrade About us

Driver Type

- ☒ CLKS
- ☐ CP
- ☐ 50WDC
- ☐ 160W
- ☐ EPS

☒ Check All

☒ AOC ☒ AST ☒ DIS ☒ CLO ☒ FT ☒ NTC

Config NTC CLO EPS

Adjustable Output Current(AOC)

Module Current 1 mA

Dimming Interface Selection(DIS)

- ☒ 1-10V
- ☐ PWM
- ☐ Smart Midnight ClockDIM
- ☐ Fixed ClockDIM
- ☐ No Dimming

1 V 10 %

8.5 V 100 %

100% 90% 80% 70% 60% 50% 40% 30% 20% 10%

0 1 2 3 4 5 6 7 8 9 10V

Connection Check

Success

Adjustable Startup Time(AST)

Start Fadeup Time 1 s

Fade Time(FT)

Fadeup Time 1 s

COM12 SAP Serial Number Burn Version:2.0 Driver Version: 1.0

Programmable Driver Configurator(V2.10)

Port Set

Connection

Load

Save

5

Read

8

Program

Firmware Upgrade

About us

Driver Type

☐ CLKS

☐ CP

☐ 50WDC

☐ 160W

☒ EPS

☒ Check All

EPS

Emergency Power Supply

Battery Capacity

6000

6

mAh (2000mAh ~ 6000mAh)

Emergency Current

200

mA

Emergency Power

15.00

7

W (1.5W ~ 15W)

COM12

Success

SAP

4529222001539

Serial Number

MU015H020AQ_MB/EM

Burn Version:2.0

Driver Version: 1.1